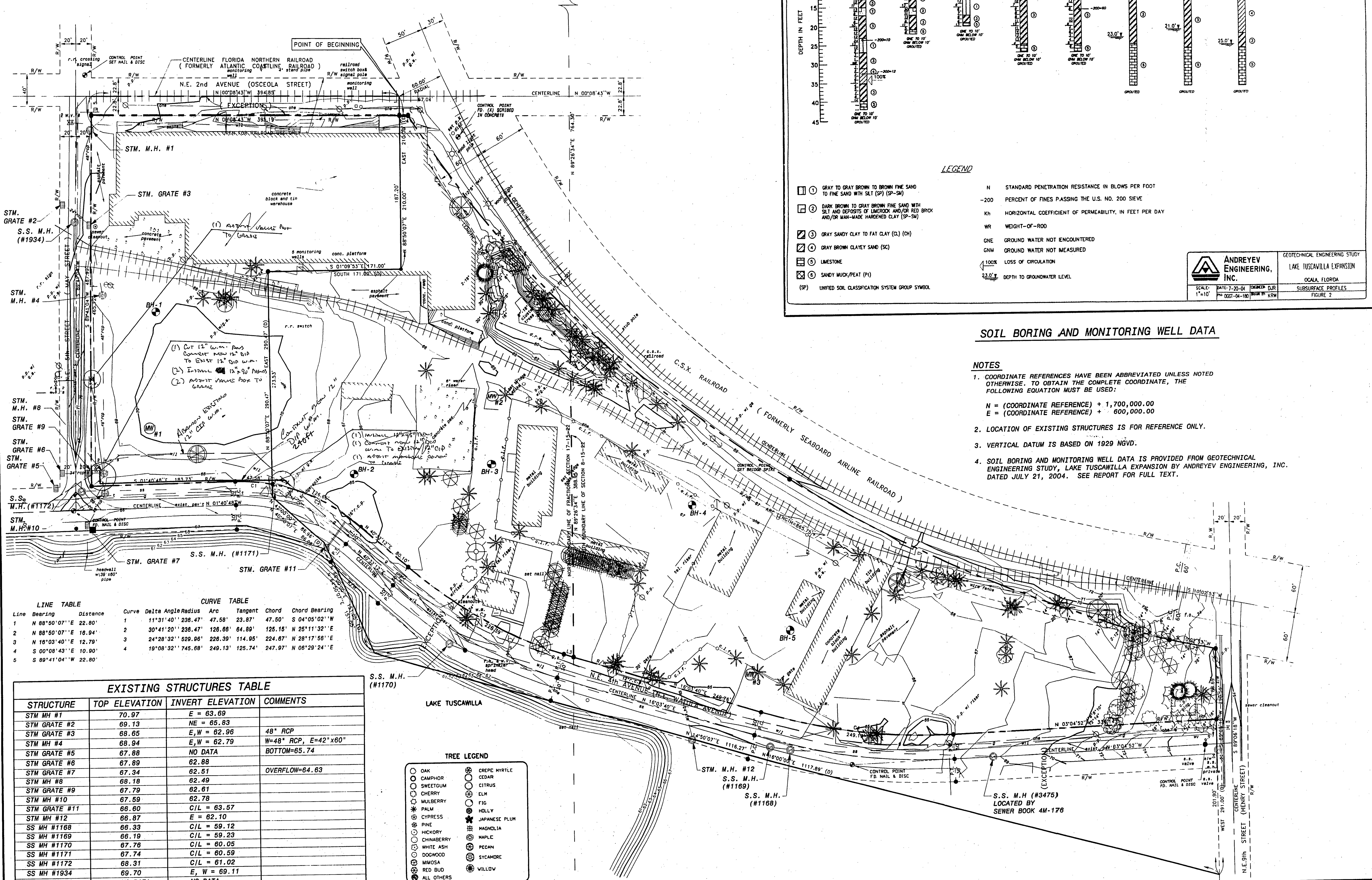


18 7
17 8
FOUND NAIL & DISC (LB #315)
S.W. CORNER OF SECTION 8-15-22
N.W. CORNER OF SECTION 17-15-22



LINE TABLE

Line	Bearing	Distance
1	N 88°50'07" E	22.80'
2	N 88°50'07" E	16.94'
3	N 18°03'40" E	12.79'
4	S 00°08'43" E	10.90'
5	S 89°41'04" W	22.80'

CURVE TABLE

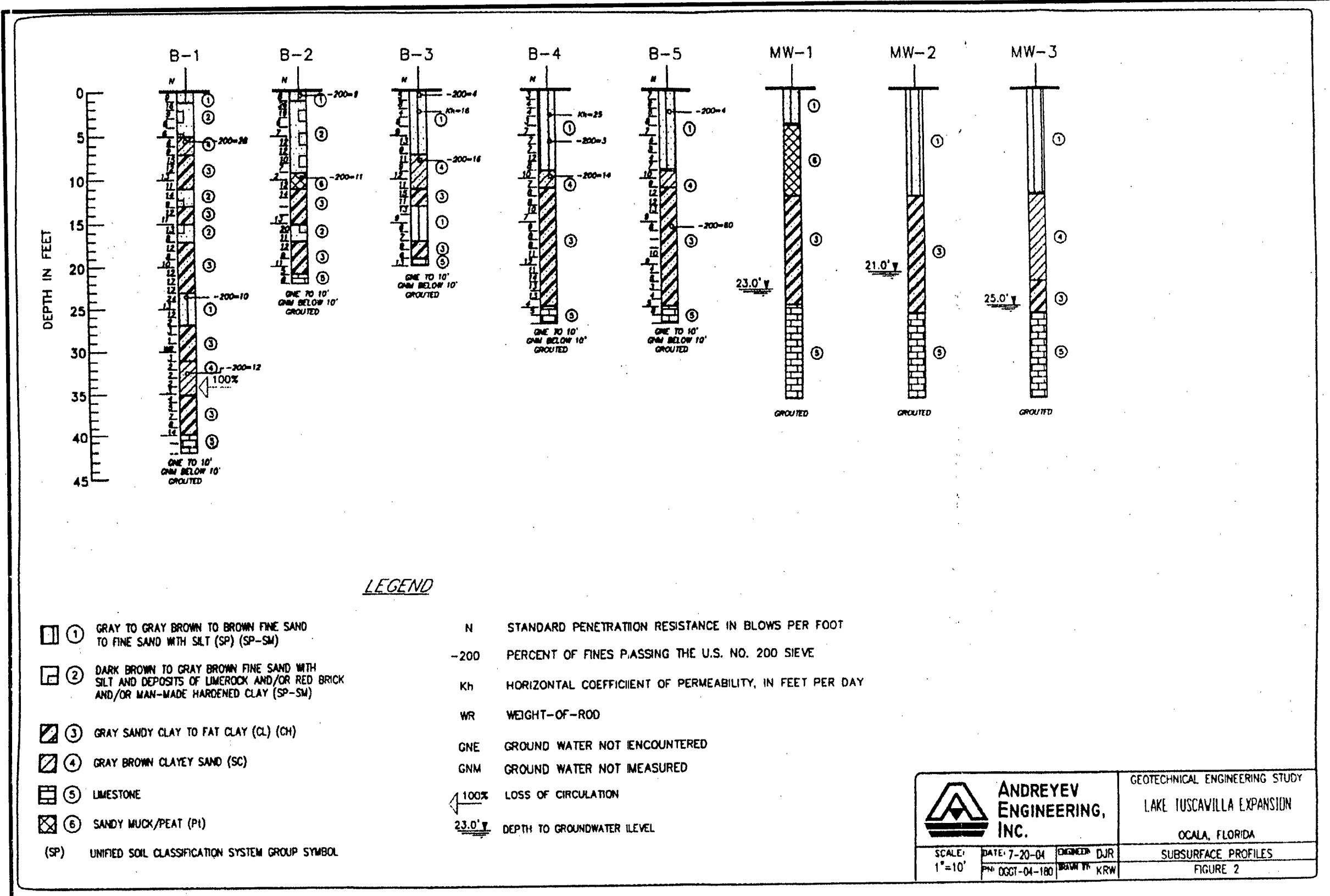
Curve	Delta Angle	Radius	Arc	Tangent	Chord	Chord Bearing
1	11°31'40"	236.47'	47.58'	23.87'	47.50'	S 04°05'02" W
2	30°41'20"	236.47'	126.86'	64.89'	126.15'	N 25°11'32" E
3	24°28'32"	529.96'	226.39'	114.95'	224.87'	N 28°17'59" E
4	19°08'32"	745.68'	249.13'	125.74'	247.97'	N 06°29'24" E

EXISTING STRUCTURES TABLE

STRUCTURE	TOP ELEVATION	INVERT ELEVATION	COMMENTS
STM MH #1	70.97	E = 63.69	
STM GRATE #2	69.13	NE = 65.83	
STM GRATE #3	68.65	E, W = 62.96	48" RCP
STM MH #4	68.94	E, W = 62.79	48" RCP, E=42"x60"
STM GRATE #5	67.88	NO DATA	BOTTOM=65.74
STM GRATE #6	67.89	62.88	
STM GRATE #7	67.34	62.51	OVERFLOW=64.63
STM MH #8	68.18	62.49	
STM GRATE #9	67.79	62.61	
STM MH #10	67.59	62.78	
STM GRATE #11	66.60	C/L = 63.57	
STM MH #12	66.87	E = 62.10	
SS MH #1168	66.33	C/L = 59.12	
SS MH #1169	66.19	C/L = 59.23	
SS MH #1170	67.76	C/L = 60.05	
SS MH #1171	67.74	C/L = 60.59	
SS MH #1172	68.31	C/L = 61.02	
SS MH #1934	69.70	E, W = 69.11	
SS MH #3475	NO DATA	NO DATA	

TREE LEGEND

○ OAK	○ CREPE MYRTLE
○ CAMPHOR	○ CEDAR
○ SWEETGUM	○ CITRUS
○ CHERRY	○ ELM
○ MULBERRY	○ FIG
○ PALM	○ HOLLY
○ CYPRESS	○ JAPANESE PLUM
○ PINE	○ MAGNOLIA
○ HICKORY	○ MAPLE
○ CHINA BERRY	○ PECAN
○ WHITE ASH	○ Sycamore
○ DOGWOOD	○ Sycamore
○ MIMOSA	○ VILLOW
○ RED BUD	
○ ALL OTHERS	



SOIL BORING AND MONITORING WELL DATA

- NOTES**
- COORDINATE REFERENCES HAVE BEEN ABBREVIATED UNLESS NOTED OTHERWISE. TO OBTAIN THE COMPLETE COORDINATE, THE FOLLOWING EQUATION MUST BE USED:
 $N = (\text{COORDINATE REFERENCE}) + 1,700,000.00$
 $E = (\text{COORDINATE REFERENCE}) + 600,000.00$
 - LOCATION OF EXISTING STRUCTURES IS FOR REFERENCE ONLY.
 - VERTICAL DATUM IS BASED ON 1929 NGVD.
 - SOIL BORING AND MONITORING WELL DATA IS PROVIDED FROM GEOTECHNICAL ENGINEERING STUDY, LAKE TUSCAWILLA EXPANSION BY ANDREYEV ENGINEERING, INC. DATED JULY 21, 2004. SEE REPORT FOR FULL TEXT.

ANDREYEV ENGINEERING, INC.
 GEOTECHNICAL ENGINEERING STUDY
 LAKE TUSCAWILLA EXPANSION
 OCALA, FLORIDA
 SUBSURFACE PROFILES
 FIGURE 2

REVISIONS AND RECORD OF ISSUE

DATE	REVISIONS AND RECORD OF ISSUE	NO. BY CK APP
07/21/04	ISSUE FOR PERMIT	
09/27/05	REVISED PER PERMIT	
03/17/06	REVISED PER PERMIT	

PROJECT NO. **136580**

Y-1

SHEET OF 7

BLACK & VEATCH CORPORATION
 10751 Deerwood Park Boulevard
 Suite 130
 Jacksonville, Florida 32256
 Certificate No. 6162

**CITY OF OCALA
 LAKE TUSCAWILLA
 WEST POND**

GENERAL EXISTING SITE CONDITIONS

DESIGNED: HPC
 DETAILED: BVV
 CHECKED: VVV
 APPROVED: [Signature]
 DATE: 9/02/05